

D I O



ExternalFTN/FSN
SURGICAL PROTOCOL

I M P  L A N T

S  Y S T E  M

E X  T E R N  A L

S U R  G I  C A L

DIO
IMPLANT

P R O T O C O L

D I O

I M P L A N T

S Y S T E M

E X T E R N A L

S U R G I C A L

P R O T O C O L



External

Drilling 04

Insertion, Cover Screw, Healing Abutment 05

Fixture Design 06

Fixture & Surgical Drill 07

FSN Surgical KIT 08

FTN Surgical KIT 09

Instrument 10

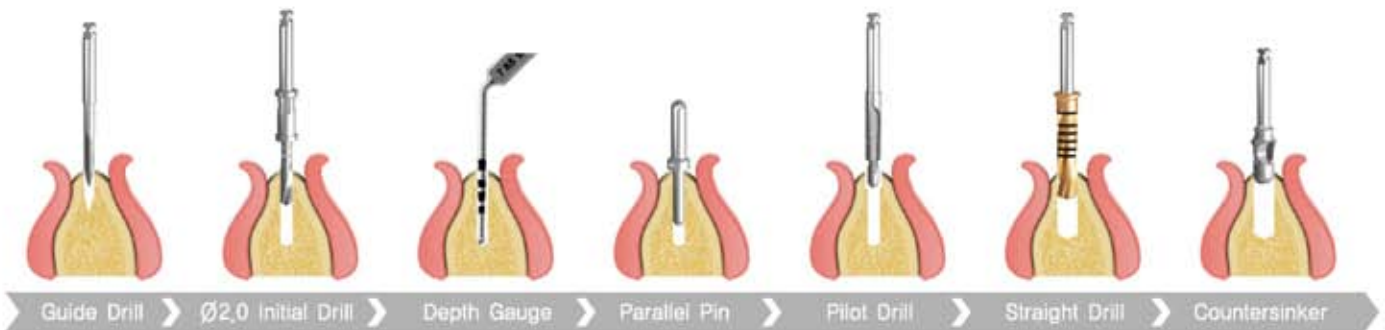
Drilling Guide 11

1. Drilling FTN/FSN

***Remark** In case of D4 bone quality, we recommend not to use the countersinker.

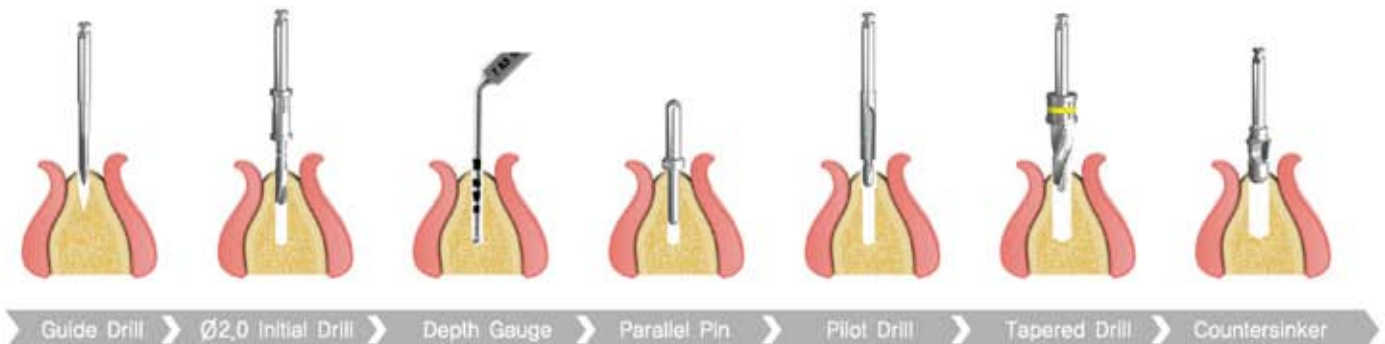
FSN (External Straight)

Drill Speed(RPM) : 800~1,200

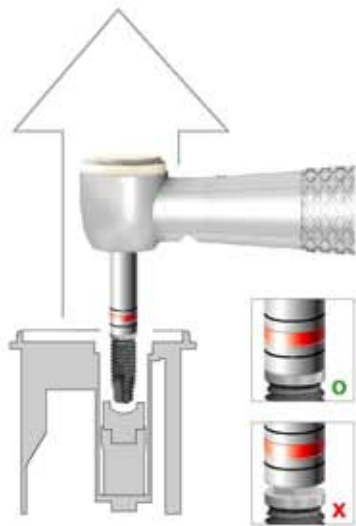


FTN (External Tapered)

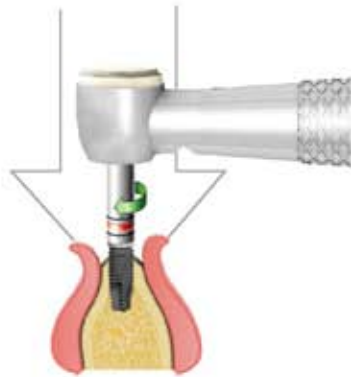
Drill Speed(RPM) : 800~1,200



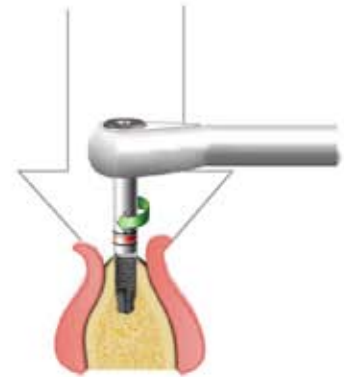
2.Insertion FSN Fixture



Fixture Connection



By Handpiece
35~50Ncm



By Torque Wrench
/ Fixture Driver

3.Cover Screw

0.9 Hex Driver



Fixture connection
10Ncm



Suture



Remove the cover screw
After osseointegration

4.Healing Abutment

1.2 Hex Driver



Fixture connection
10Ncm



Suture
/ Opening gingival tissue

Fixture Design **FSN** (External Straight)



External Hex Connection

External type implant system with external hex connection



Body design

Straight body form and triangle thread enable excellent initial stability

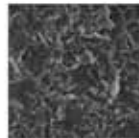


Self Tapping

Advanced thread and apex design enable easy self tapping and excellent initial stability

Apex design

Tapered Apex enables easy initial insertion



Surface

Biocompatible RBM

Fixture Design **FTN** (External Tapered)



External Hex Connection

External type implant system with external hex connection



Root Form design

Root form design enables excellent initial stability, Reduces possibility of touching adjacent teeth root during implant insertion

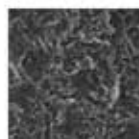


Self Tapping

Advanced thread and apex design enable easy self tapping and excellent initial stability

Apex design

Tapered Apex enables easy initial insertion




Surface

Biocompatible RBM

FSN Matching System Fixture & Surgical Drill



	Narrow	Regular	Wide	T-Wide	(mm)
Platform	Ø3,5	Ø4,1	Ø5,1	Ø5,0	
Diameter	Ø3,3	Ø3,75/Ø4,0	Ø5,0	Ø5,5/Ø6,0	Ø5,0
Length	7, 8,5, 10, 11,5, 13, 15			8,5, 10, 11,5, 13, 15	

Straight Drill  Ø2,7, Ø3,0, Ø3,3, Ø3,5, Ø3,8, Ø4,3, Ø4,8

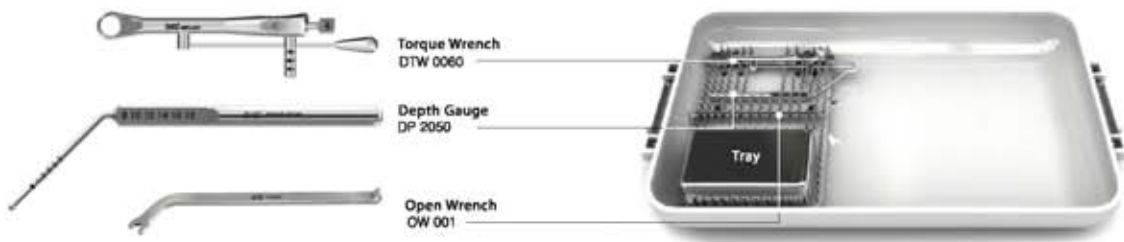
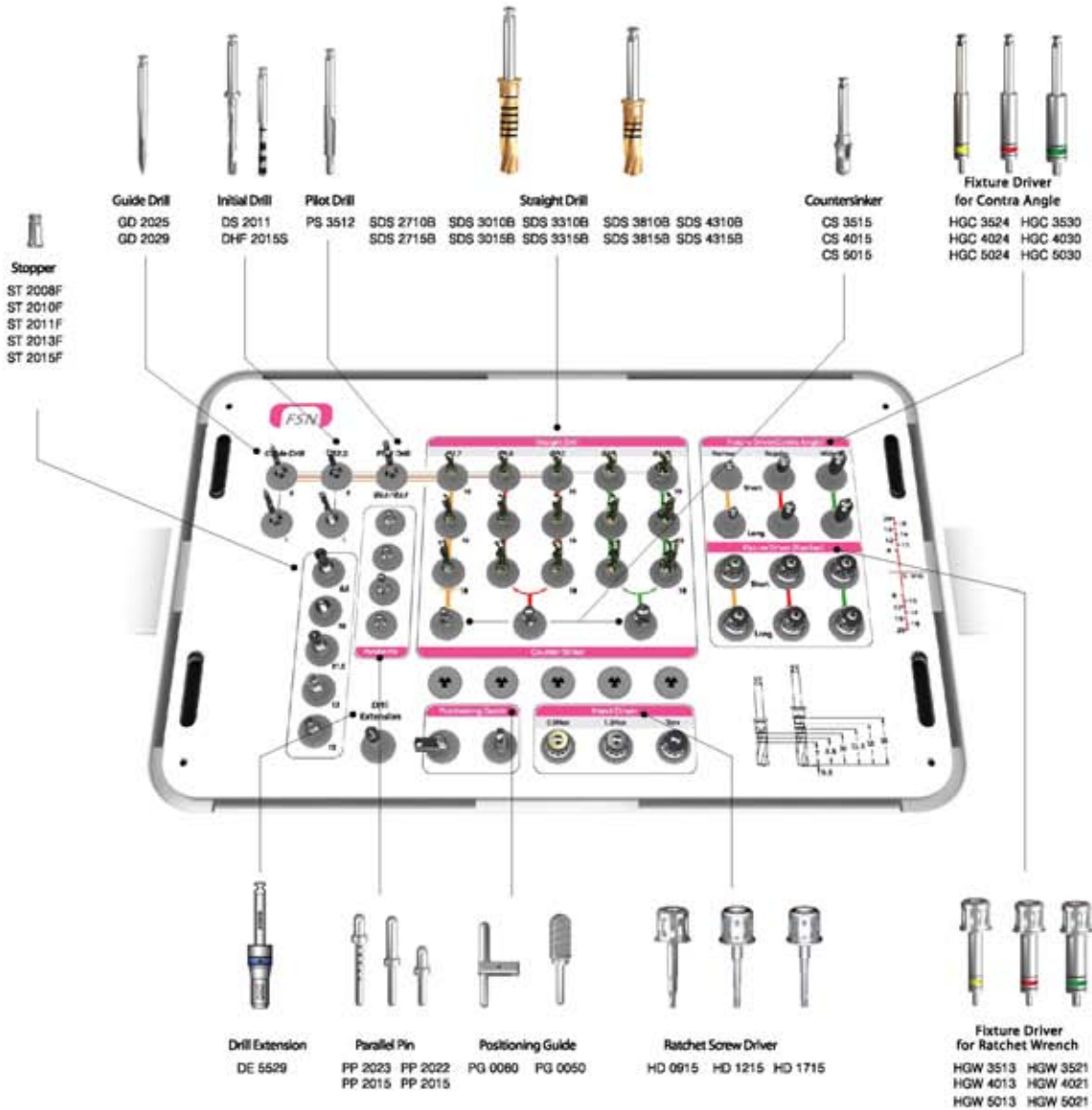
FTN Matching System Fixture & Surgical Drill



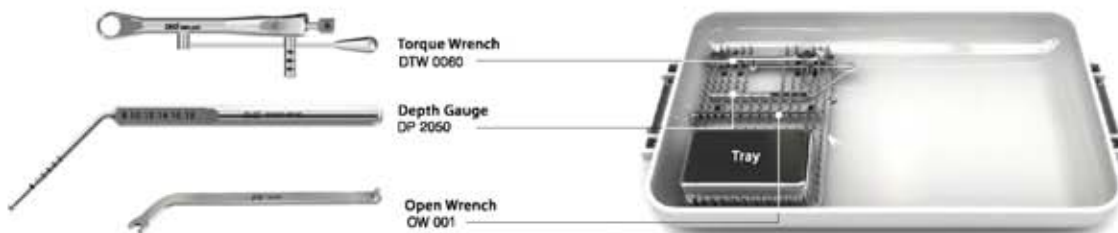
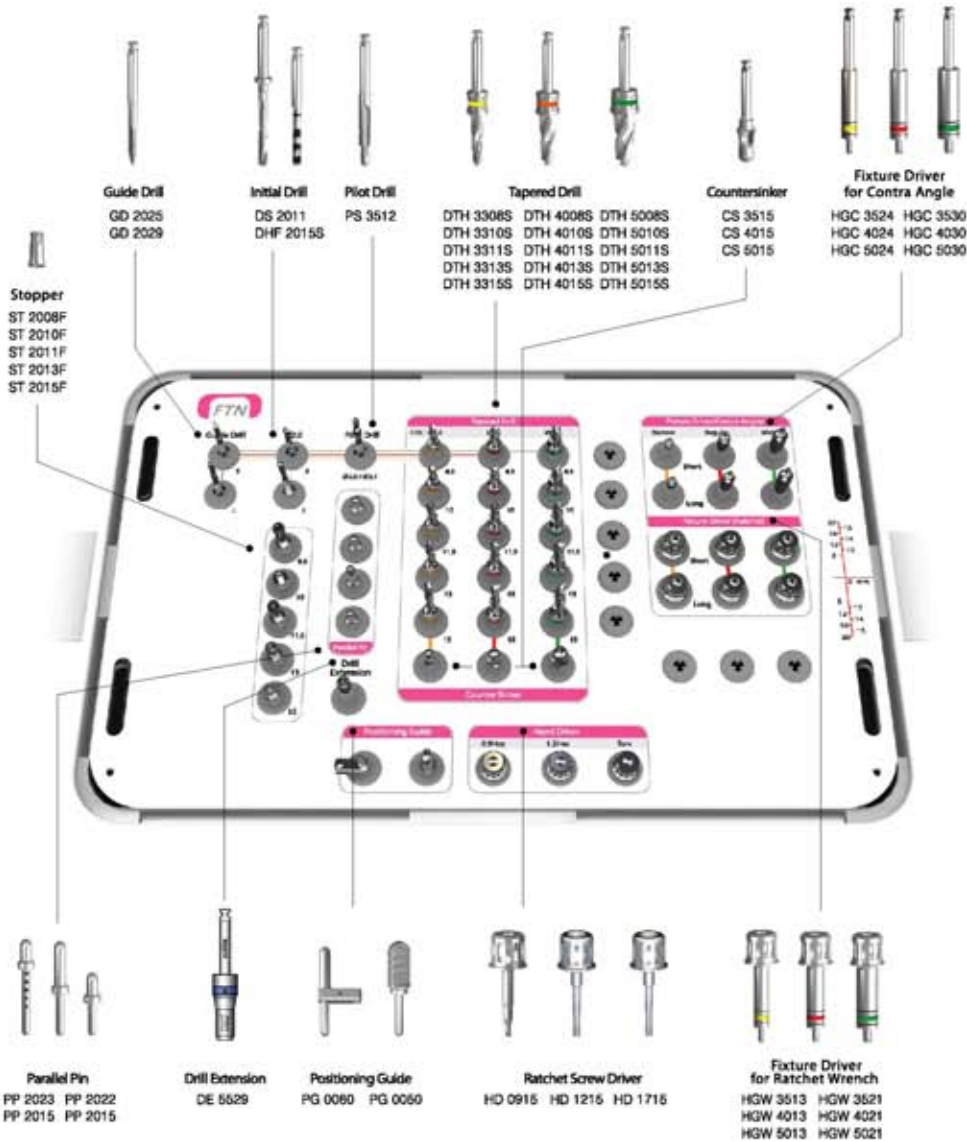
	Narrow	Regular	Wide	T-Wide	(mm)
Platform	Ø3,5	Ø4,1	Ø5,1	Ø5,0	
Diameter	Ø3,3	Ø4,0	Ø5,0/Ø5,5	Ø5,0	
Length	8,5, 10, 11,5, 13, 15				

Tapered Drill  

Surgical KIT FSN Surgical KIT



Surgical KIT FTN Surgical KIT



Instrument



HGC 3524	HGC 4024	HGC 5024	HGW 3513	HGW 4013	HGW 5013
HGC 3530	HGC 4030	HGC 5030	HGW 3521	HGW 4021	HGW 5021
HGC 3535	HGC 4035	HGC 5035	HGW 3525	HGW 4025	HGW 5025

Fixture Driver



PP 2015 PP 2022 PP 2023

Parallel Pin



-	-	HD 1205	-
HD 0510	HD 0910	HD 1210	HD 1710
HD 0515	HD 0915	HD 1215	HD 1715
-	HD 0920	HD 1220	HD 1720

Hand Driver



DE 5529

Drill Extension



DTW 0080

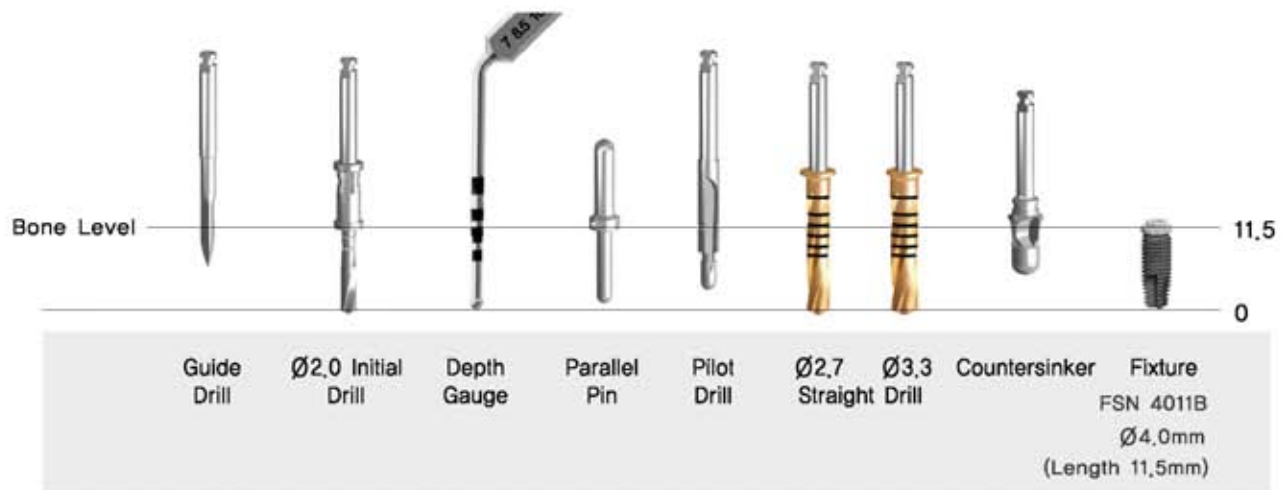
Torque Wrench



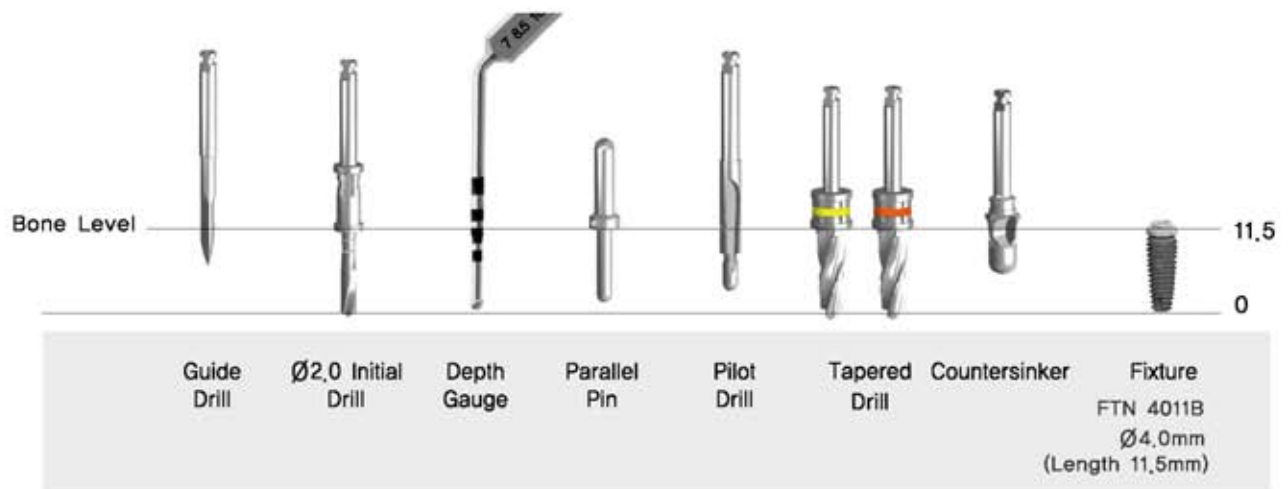
DP 2050

Depth Gauge

Drilling Guide FSN



Drilling Guide FTN



D I O |
I M P | L A N T
S | Y S T E M
E X | T E R N | A L
S U R G I | C A L
P R | O T O C O L

www.dio.co.kr

DIO IMPLANT

DIO Corporation

1464, U-dong Haeundae-gu Busan, 612-020, Korea
Tel. +82-51-745-7777 Fax. +82-51-745-7778

