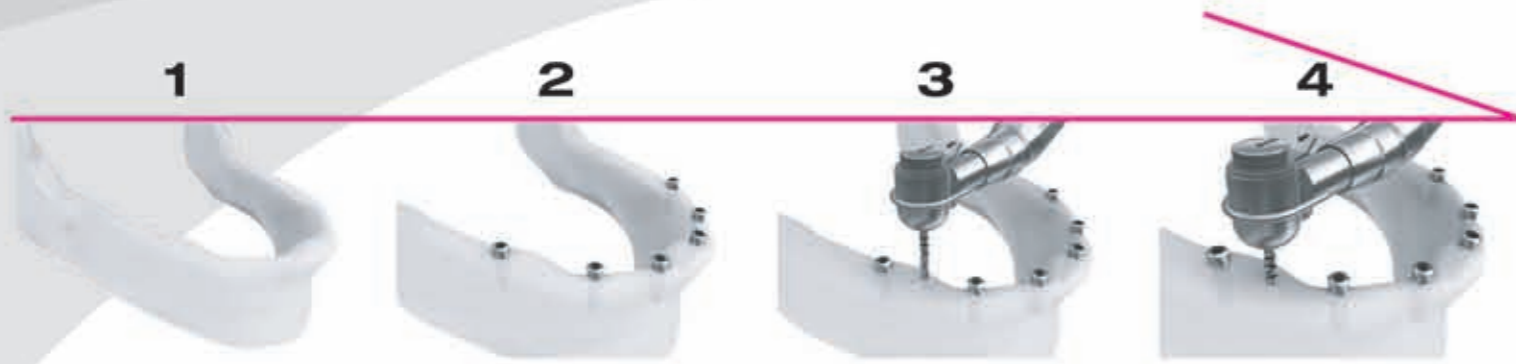
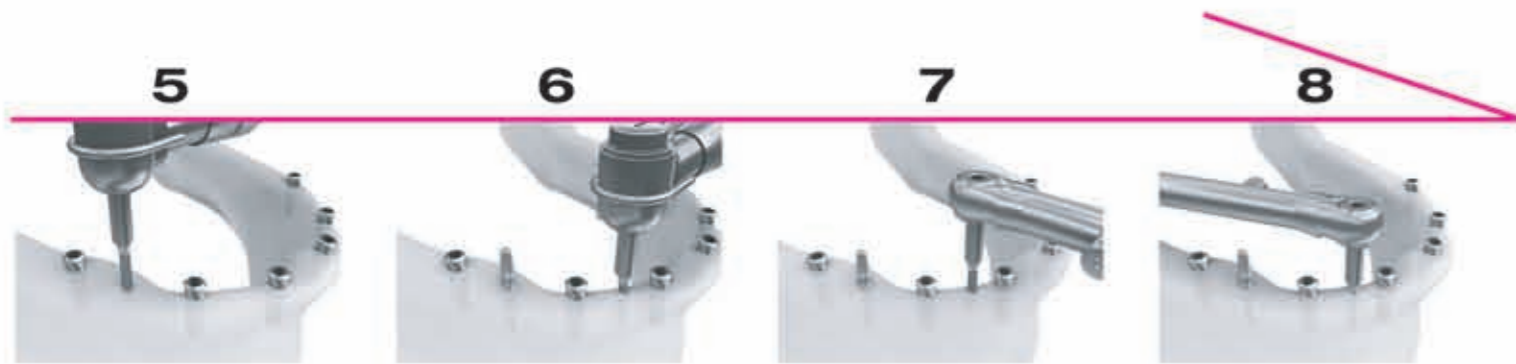


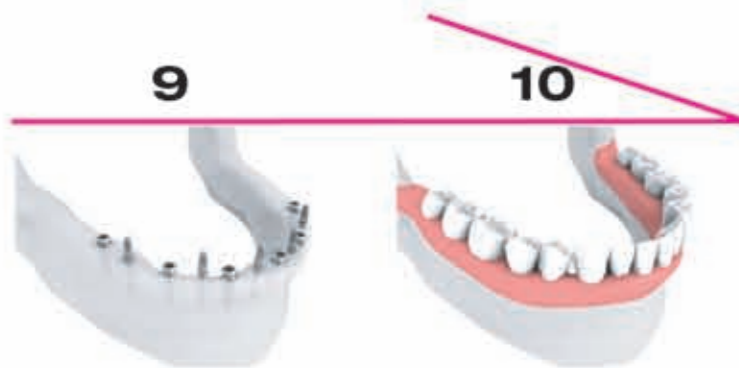
Surgical Protocol



Select an insertion point. Drill the cortical bone using a 1.2mm straight drill by repeating a smooth pumping motion. Drilling depth is to be one third of the implant length that will be inserted. (800~1,200rpm)



Attach the implant head to the contra angle driver that is connected with the handpiece. Set the torque to 35Ncm. The guide point of the ProTem implants initiates the self tapping as the implant is inserted by a low speed high torque handpiece (10~20rpm). The initial stability will be enhanced as the implant is inserted and bone expands.



As the final process of the implant insertion, attach the ratchet wrench to the torque wrench, and then connect them with the ratchet driver that holds the implant head. Finish the surgical process by slowly turning the ratchet driver in clockwise.

A slow turning-in protects the implants from fractures and provides the wider contact area between bone and thread to ensure the initial stability by providing a time for bone to be expanded.

No.	Diameter	Pitch	Dense Bone(D1)		Medium Bone(D2)		Poor Bone(D3, D4)	
			Drill(∅)	Depth(mm)	Drill(∅)	Depth(mm)	Drill(∅)	Depth(mm)
1	∅2.0	0.6	1.2	1/2~3/4	1.2	Cortical~1/2	—	—
2	∅2.5	1	2.0	1/2~3/4	1.5	1/2	1.5	Cortical
3	∅3.0	1	2.5	3/4~Full	2.0~2.5	1/2~Full	2.0~2.5	1/3~1/2

DIO

DIO IMPLANT

DIO Corporation

Headquarters(Factory)
1464, U-dong Haeundae-gu Busan, 612-020, Korea
Tel. +82-51-745-7777 Fax. +82-51-745-7778

Seoul office
Room 803, Ssangnim B/D. 151-11 Ssangnim-dong,
Jung-gu, Seoul, 100-400, Korea
Tel. +82-2-2268-2850



Overseas Branches

DIO U.S.A (Los Angeles)
Tel. +1 213 365 2875
DIO China (Beijing / Shanghai)
Tel. +86 10 8188 0183 / +86 21 3431 9504
DIO Australia (Sydney)
Tel. +61 2 9413 9588
DIO Mexico (Mexico City)
Tel. +52 1 55 1843 0690
DIO Thailand (Bangkok)
Tel. +66 2 714 7875
DIO Vietnam (Ho Chi Minh)
Tel. +84 8 3997 4878

Global Distribution

America
U.S.A
Brazil, Mexico, Venezuela, Colombia, Aruba, Curacao
Trinidad & Tobago
Europe
UK, Germany, France, Russia, Italy, Belgium, Netherland
Greece, Poland, Hungary, Bulgaria, Cyprus
Albania, Turkey, Spain, Portugal
Ukraine, Luxemburg
Lithuania, Kazakhstan, Tajikistan
Asia, Middle East, Oceania
Australia, Newzealand, China, Malaysia, Singapore
Indonesia, Taiwan, Philippines, India, Pakistan, Iran
Saudi arabia, Egypt, UAE, Thailand, Vietnam, Syria

PROTEM [SECURE]-H

Implant System

DIO Protem/Secure Implant System

The ProTem/Secure Implants are multi - functional implant system available in case of the enhancement of the denture retention, the application to the narrow gap where the full - sized implants can not be placed in such as maxillary or mandibular centrals, and the retention of provisional prosthesis after the conventional implant surgery.

ProTem/Secure Implants are available in two types (Post /Ball) , three diameters (2.0 / 2.5 /3.0) and four lengths (10/12/14/16) that are applicable to various cases



DIO

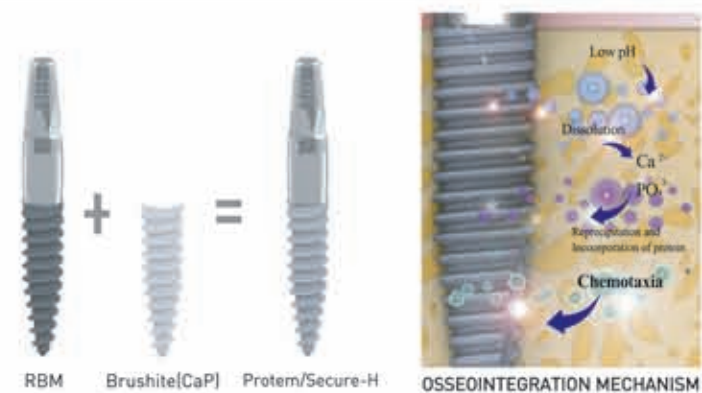
PROTEM [SECURE]-H

Faster and improved osseointegration
Higher success rate regardless of bone type
solution for exfoliation

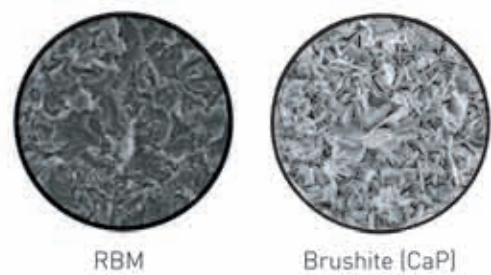
Dual Surface treatment

ProTem/Secure Implant + RBM + Brushite

- Abundant blood supply by capillary effect
- Heavy release of Ca²⁺ and PO₄³⁻ ions during the dissolution phase
- Increase of osteoblast the blood on implant surface
- Faster and improved osseointegration between implant and bone



Brushite(CaP) coating enhances osseointegration in poor bone quality and exhibit greater resistance to micromotion.



PROTEM/ SECURE (Post Type) Implant

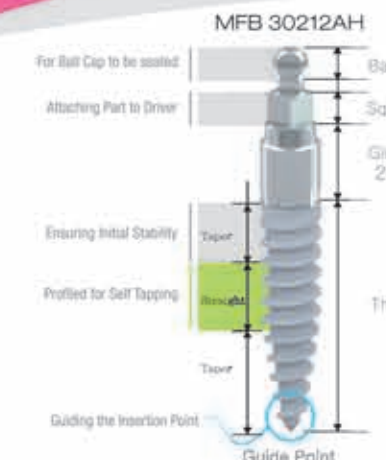
- Suitable for narrow spaces on the upper mandible
- Single body Fixture and Abutment designed to withstand the stress of mastication
- Highly bio - compatible RBM / Brushite(CaP) Surface
- Optimal abutment size and form to ensure successful implantation
- Self - Tapping body design for secure initial entry and firm gripping power



	Diameter	Collar	Pitch	10 mm	12 mm	Length	14 mm	16 mm
B r u s h i t e	2.5 mm	2.0 mm	1	MFP 25210H	MFP 25212H	MFP 25214H	—	—
	2.5 mm	4.0 mm	1	MFP 25410H	MFP 25412H	MFP 25414H	—	—
	3.0 mm	2.0 mm	1	MFP 30210AH	MFP 30212AH	MFP 30214AH	MFP 30216AH	—
	3.0 mm	4.0 mm	1	MFP 30410AH	MFP 30412AH	MFP 30414AH	MFP 30416AH	—
R B M	2.0 mm	2.0 mm	0.6	MFP 20210	MFP 20212	MFP 20214	—	—
	2.0 mm	4.0 mm	0.6	MFP 20410	MFP 20412	MFP 20414	—	—
	2.5 mm	2.0 mm	1	MFP 25210	MFP 25212	MFP 25214	—	—
	2.5 mm	4.0 mm	1	MFP 25410	MFP 25412	MFP 25414	—	—
	3.0 mm	2.0 mm	1	MFP 30210A	MFP 30212A	MFP 30214A	MFP 30216A	—
	3.0 mm	4.0 mm	1	MFP 30410A	MFP 30412A	MFP 30414A	MFP 30416A	—

Prosthetic Components | Surgical Kit | Surgical Kit : Post / Ball Type Common Use

<p>ANALOG</p> <p>MAP 3010 Diameter 2.5 mm Length 10mm</p>	<p>CONTRA ANGLE DRIVER</p> <p>MGC 3510 Length 10 mm MGC 3515 Diameter 3.5 mm Length 15 mm MGC 3520 Diameter 3.5 mm Length 20 mm</p>	<p>STRAIGHT DRILL</p> <p>Diameter 12 mm Length 18 mm 1.2 mm MSD 1212 1.5 mm MSD 1512 2.0 mm MSD 2012 2.5 mm MSD 2512</p>
<p>MAP 3017</p> <p>MAP 3017 Diameter 3.0 mm Length 10mm</p>	<p>RATCHET DRIVER</p> <p>MGR 3510 Length 10 mm MGR 3515 Diameter 3.5 mm Length 15 mm MGR 3520 Diameter 3.5 mm Length 20 mm</p>	<p>TISSUE PUNCH</p> <p>Diameter 10 mm 2.5 mm MTP 2510 3.0 mm MTP 3010 3.5 mm MTP 3510</p>



PROTEM/ SECURE (Ball Type) Implant

- Used in creating an immediate temporary system for removable prosthetics
- Peek system healing cap and analog provides simple and convenient temporary prosthetic fabrication
- Body designed for secure initial entry firm gripping power
- Optimal self - tapping thread design



	Diameter	Collar	Pitch	10 mm	12 mm	Length	14 mm	16 mm
B r u s h i t e	2.5 mm	2.0 mm	1	MFB 25210H	MFB 25212H	MFB 25214H	—	—
	2.5 mm	4.0 mm	1	MFB 25410H	MFB 25412H	MFB 25414H	—	—
	3.0 mm	2.0 mm	1	MFB 30210AH	MFB 30212AH	MFB 30214AH	MFB 30216AH	—
	3.0 mm	4.0 mm	1	MFB 30410AH	MFB 30412AH	MFB 30414AH	MFB 30416AH	—
R B M	2.0 mm	2.0 mm	0.6	MFB 20210	MFB 20212	MFB 20214	—	—
	2.0 mm	4.0 mm	0.6	MFB 20410	MFB 20412	MFB 20414	—	—
	2.5 mm	2.0 mm	1	MFB 25210	MFB 25212	MFB 25214	—	—
	2.5 mm	4.0 mm	1	MFB 25410	MFB 25412	MFB 25414	—	—
	3.0 mm	2.0 mm	1	MFB 30210A	MFB 30212A	MFB 30214A	MFB 30216A	—
	3.0 mm	4.0 mm	1	MFB 30410A	MFB 30412A	MFB 30414A	MFB 30416A	—

Prosthetic Components | Surgical Kit

<p>BALL CAP</p> <p>MBC 3803 Diameter 3.8 mm Length 3.4 mm</p>	<p>ANALOG</p> <p>MAB 2510 Diameter 2.5 mm Length 10 mm MAB 3014 Diameter 3.0 mm Length 10 mm</p>	<p>CEMENTED ABUTMENT</p> <p>MCB 3508 Diameter 8 mm MCB 3512 Diameter 3.5 mm Length 12 mm</p>	<p>CONTRA ANGLE DRIVER</p> <p>Diameter 3.4 mm Length 10 mm MGC 3410 Length 15 mm MGC 3415 Length 20 mm MGC 3420 Length 20 mm</p>	
<p>O-ring</p> <p>OR 3401 Diameter 3.4 mm Length 1.0 mm</p>	<p>HEALING CAP</p> <p>MHC 5006 Diameter 5.0 mm Length 6mm MHC 5008 Diameter 5.0 mm Length 8mm</p>	<p>CUSTOM ABUTMENT</p> <p>MCA 4011 Diameter 4 mm Length 11 mm Square 1.67 mm</p>	<p>IMPRESSION COPING</p> <p>MIC 3511 Diameter 3.5 mm Length 11 mm Square 1.67 mm</p>	<p>RATCHET DRIVER</p> <p>Diameter 3.4 mm Length 10 mm MGR 3410 Length 15 mm MGR 3415 Length 20 mm MGR 3420 Length 20 mm</p>

Clinical Cases

Case 1 - ProTem / Secure-H



Case 2 - ProTem / Secure



Case 3 - ProTem / Secure



Any case, Any bone